



DRILLING LOG



FROM : (mt) 500 TO : (mt) 3060 SCALE : 1/ 1000

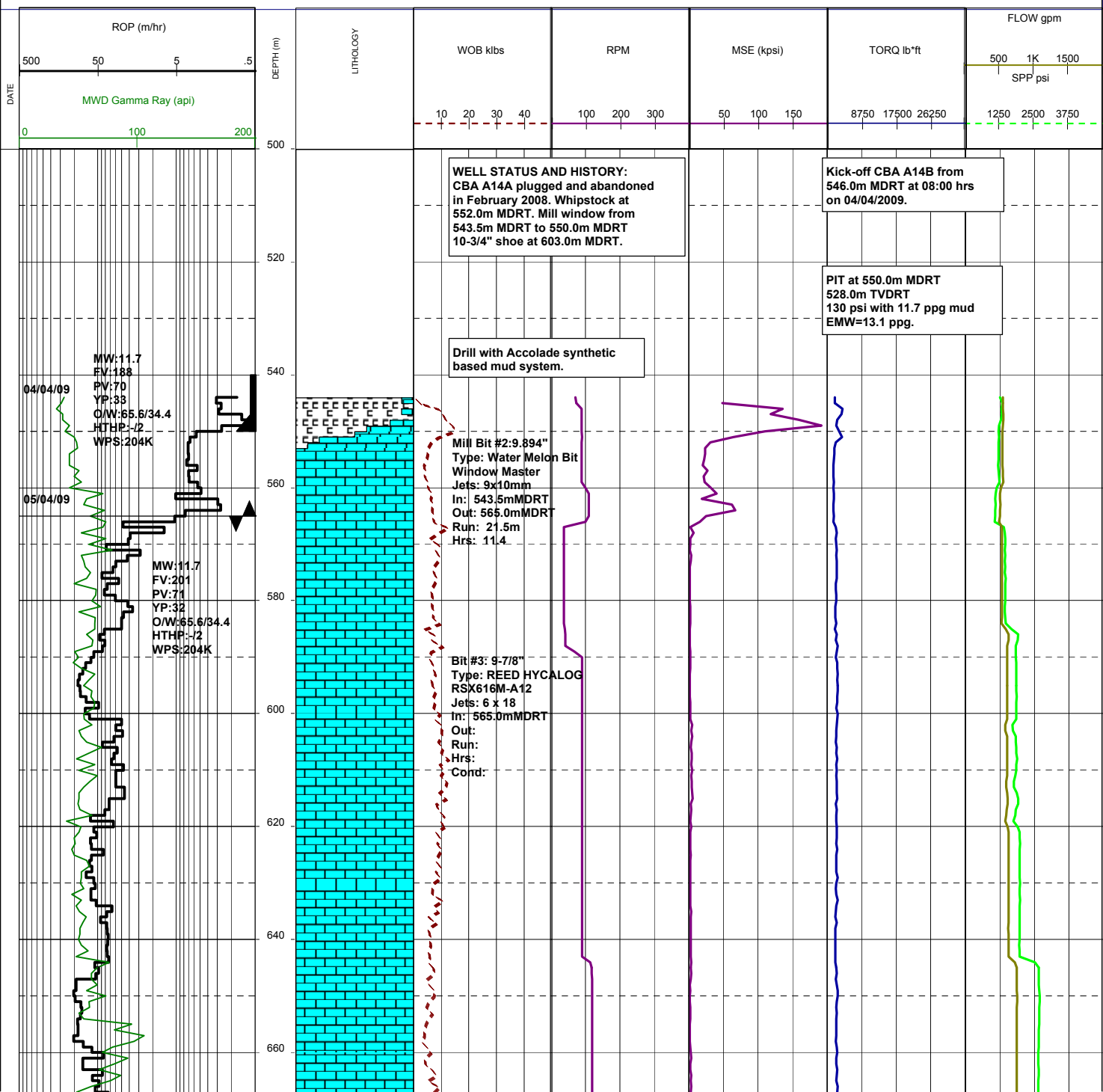
Well Name : Cobia A14B
Company : ESSO AUSTRALIA LTD

Country : AUSTRALIA

RT-MSL (m) : 41.0
RT-SEABED (m) : 120.0

Final TD:
Final TVD:

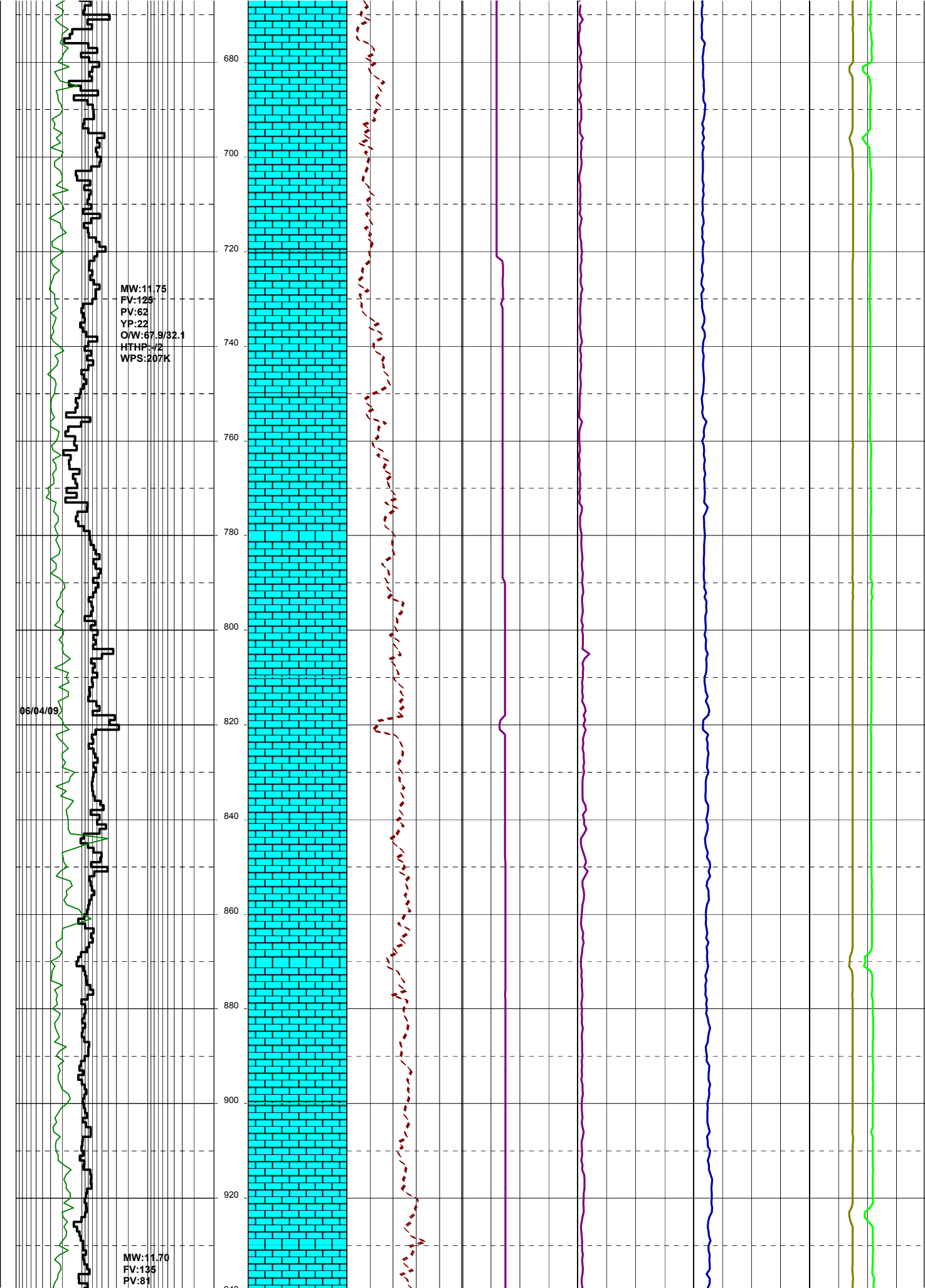
Generated by geoNEXT Package



MW:11.75
FV:125
PV:62
YP:22
O/W:67.9/32.1
HTFP:72
WPS:207K

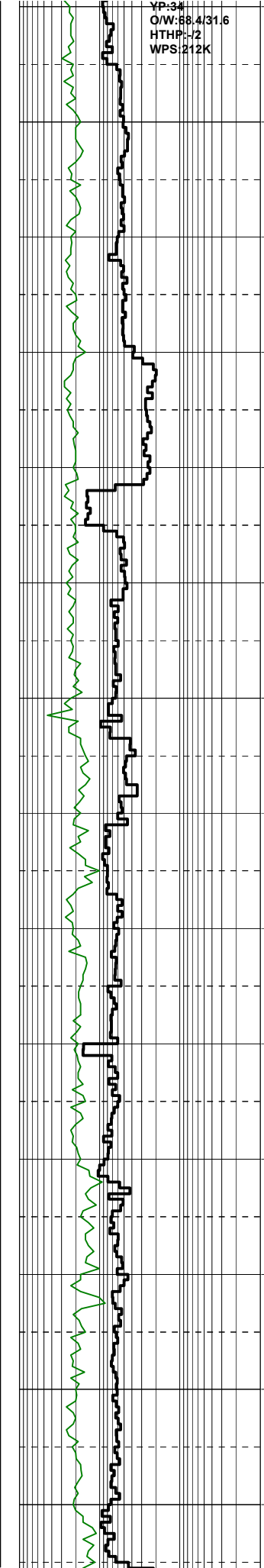
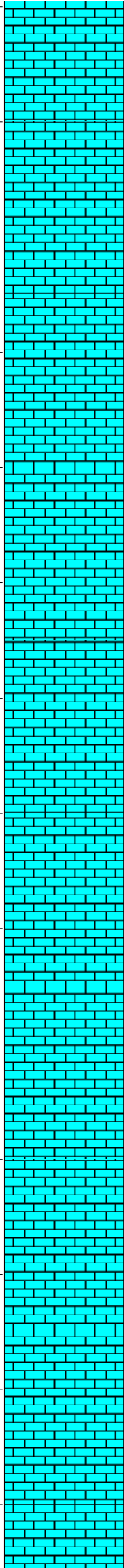
06/04/09

MW:11.70
FV:135
PV:81



YP:34
O/W: 88.4/31.6
HTHP: -2
WPS: 212K

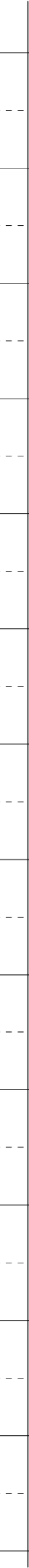
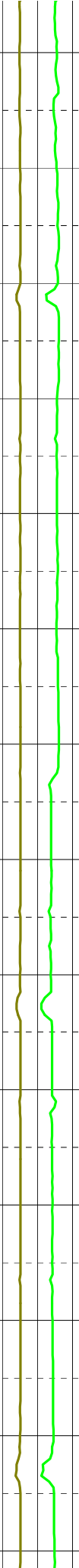
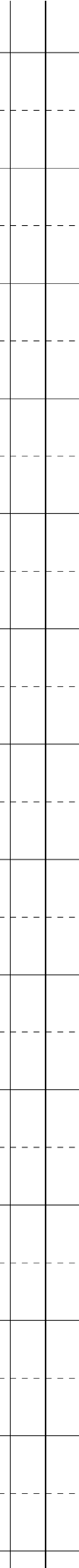
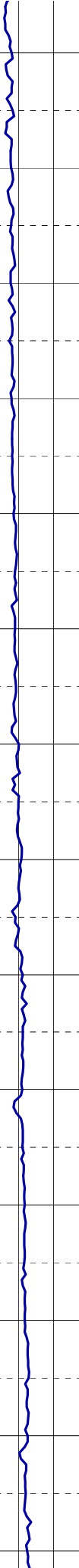
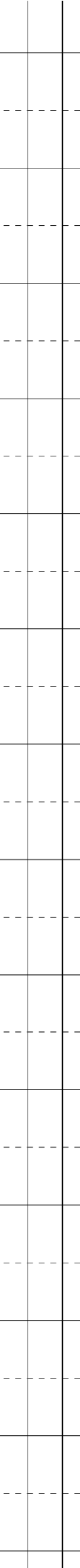
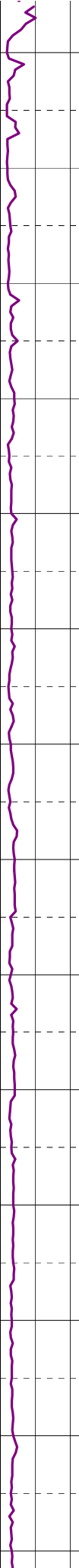
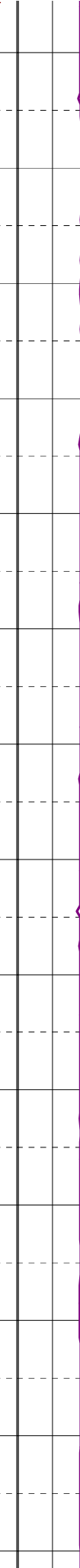
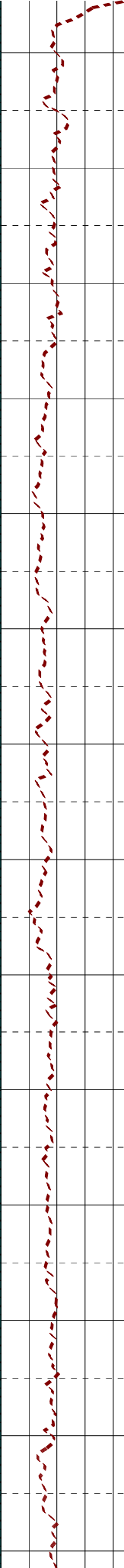
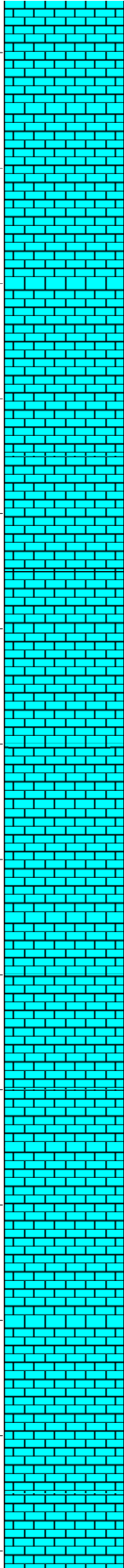
940
960
980
1000
1020
1040
1060
1080
1100
1120
1140
1160
1180
1200

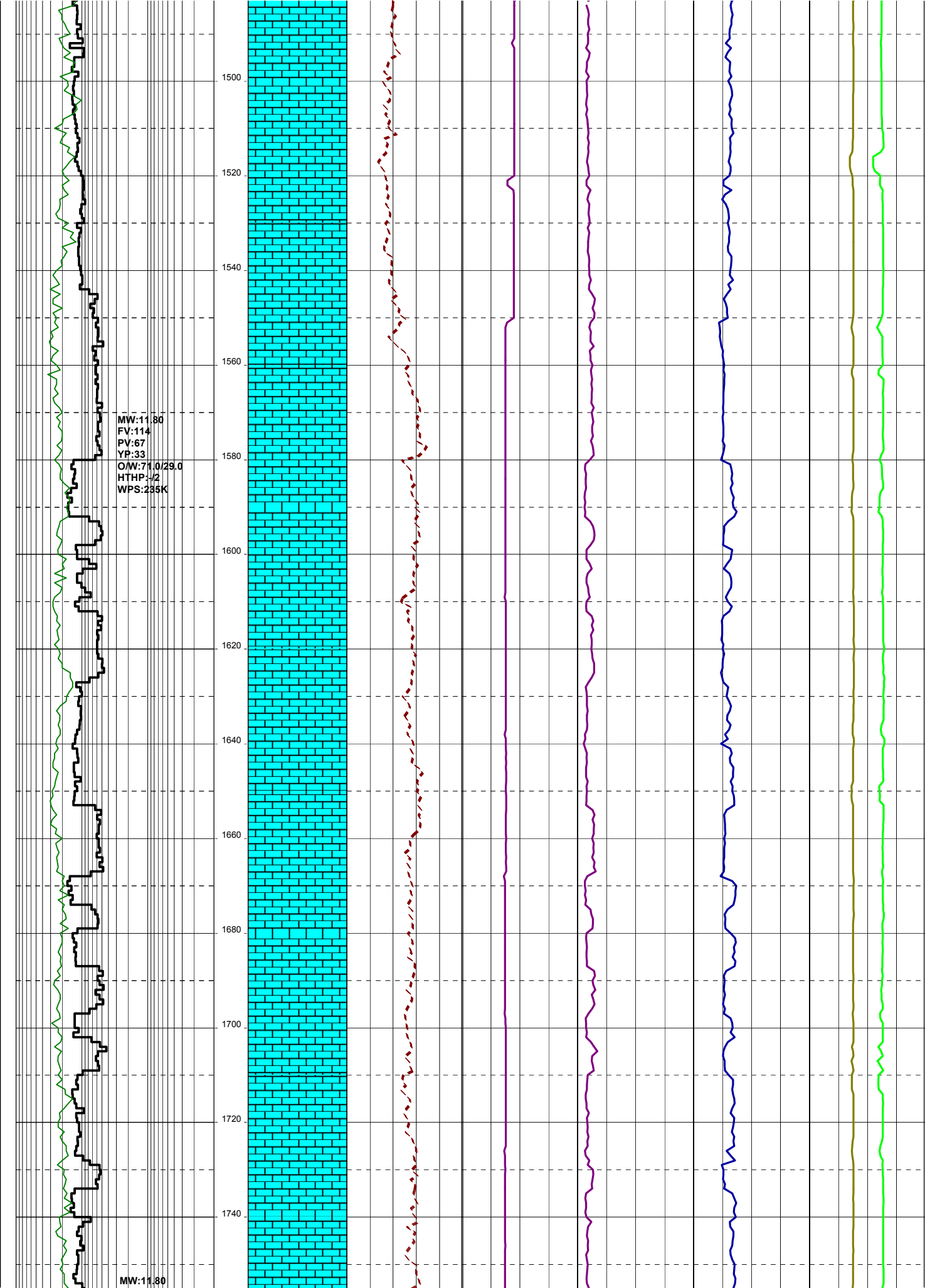


MW:11.80
FV:112
PV:68
YP:29
O/W:71.0/29.0
HTHP:-2
WPS:235K

07/04/09

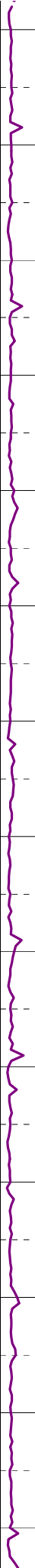
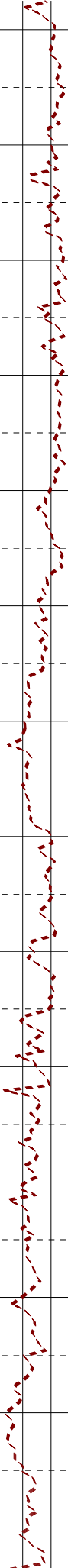
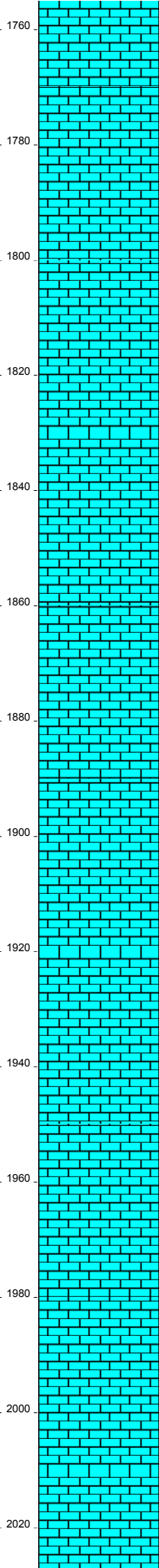
1220
1240
1260
1280
1300
1320
1340
1360
1380
1400
1420
1440
1460
1480



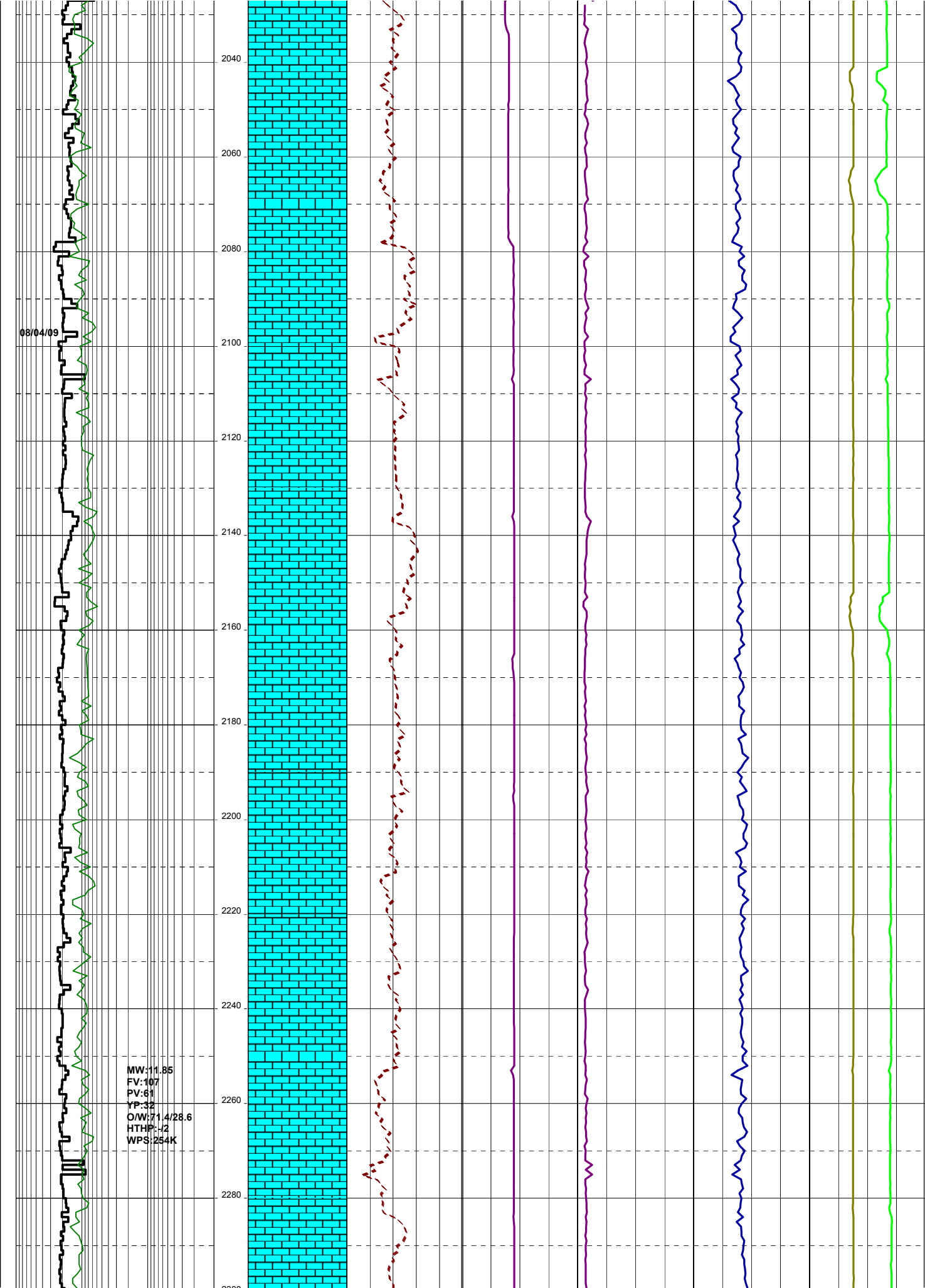


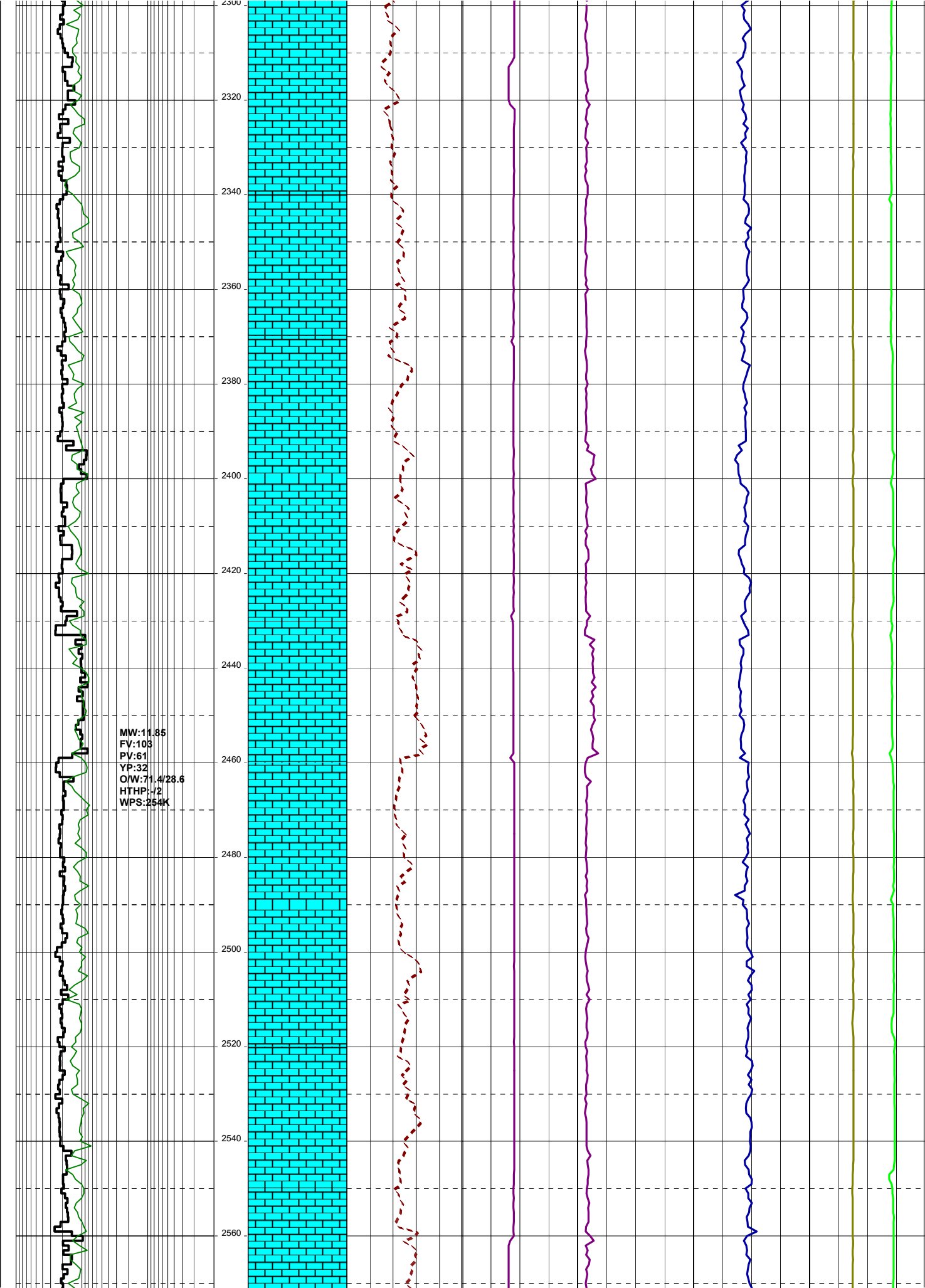
FV:112
PV:67
YP:31
OW:70.5/29.5
HTHP:-2
WPS:241K

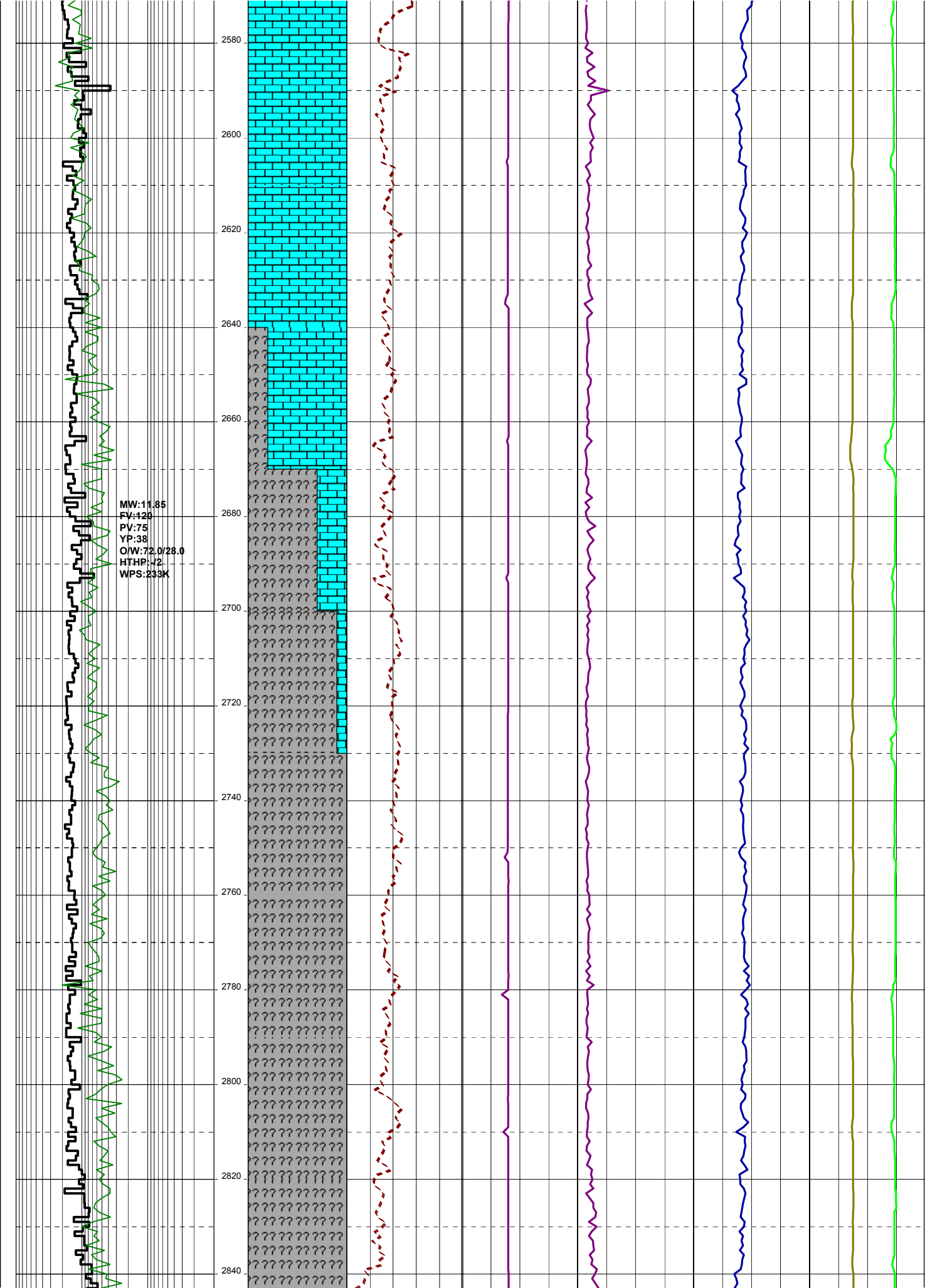
MW:11.80
FV:107
PV:65
YP:34
OW:71.4/28.6
HTHP:-2
WPS:254K



1760
1780
1800
1820
1840
1860
1880
1900
1920
1940
1960
1980
2000
2020



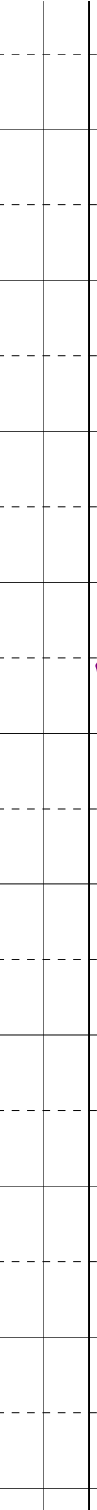
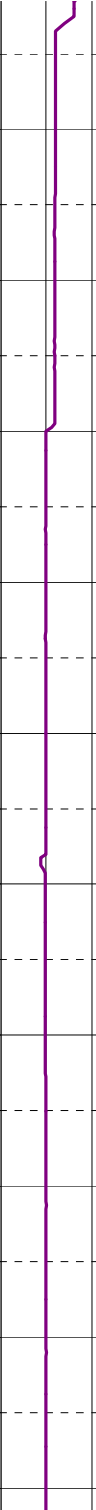
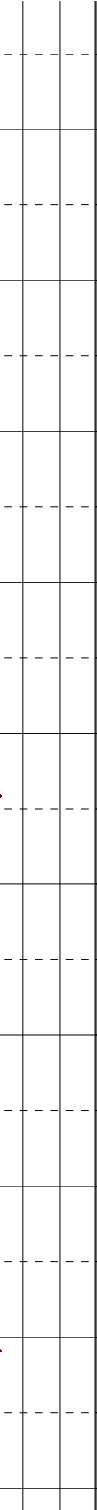
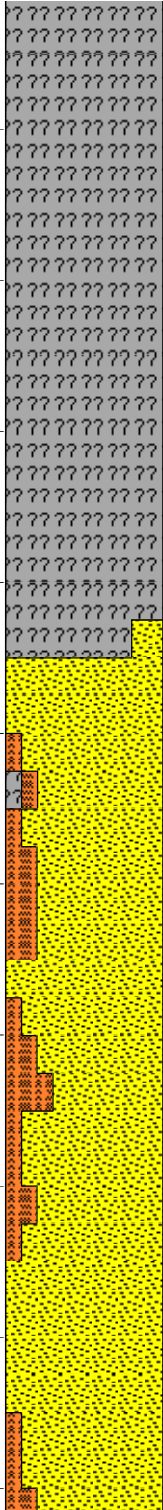




MW:11.90
FV:114
PV:74
YP:43
O/W:73.5/26.5
HTHP:-J2
WPS:273K

09/04/09

2860
2880
2900
2920
2940
2960
2980
3000
3020
3040
3060



Cobia A14B reached TD of
3043.00mDRT (2491.78mTVDRT)
(-2450.78mTVDSS) at 02:30 hrs
on 09/04/2009